

# FAULT CLEAR<sup>®</sup>

Triple-Single Auto Recloser



## ► Working directly with SEL controller

FAULT CLEAR<sup>®</sup> works directly with “SEL-651R-2” and **32-pin** control cable for three-phase/triple-single application and “SEL-351RS” controller with **10-pin** control cable for single-phase application.

## ► Pole-ready design

FAULT CLEAR<sup>®</sup> is also ready to “pole-ready” design for **easy installation at the site**, which is included lightning arresters, NEMA pads, PTs for the controller.

## ► Long-term reliability

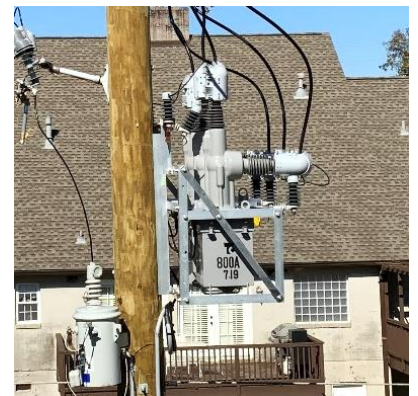
FAULT CLEAR<sup>®</sup> is **designed to have a long service life by selecting reliable materials and parts**. Bushings are made of hydrophobic cycloaliphatic epoxy (HCEP) with silicon sheds for high UV environments.

## ► 10-year warranty\*

FAULT CLEAR<sup>®</sup> is designed to have a long service life by selecting reliable materials and parts, which allows us to offer **10-year warranty at no extra cost**.

\*Limited to Reclosers sold in the United States.

Item	Coming soon...		
	27 kV	38 kV	
Rated voltage [kV]	27	38	
Rated frequency [Hz]	60		
Rated current [A]	800		
Overload current (8hours) [A]	960		
Rated power frequency withstand voltage [kV]	Dry	60	70
	Wet	50	70
Mechanical endurance [operations]	10,000		
Rated interrupting current [kA]	16		
Rated short-circuit making current [ kA <sub>peak</sub> ]	41.6		
Duty cycle [operations]	116		
Rated short time withstand current	16 kA <sub>r.m.s.</sub> – 3 s		
Rated lightning impulse withstand voltage [kV]	150	170	
Rated cable charging current [A]	25	40	
Rated line charging current [A]	5		
Creepage distance [inches (mm)]	43.7 (1,110)	49.09 (1,247)	
Pollution level	Class IV: Very heavy (IEC 815)		
Operation mechanism	Auto open and close; Manual open and lockout		
Insulation medium	Solid dielectric		
Arc extinction medium	Vacuum		
Bushing materials	Silicon and HCEP		
Standard operating sequence	O – 0.5 s – CO – 2 s – CO – 5 s – CO		
Ambient temperature [°F(°C)]	-40 to +140 (-40 to +60)		



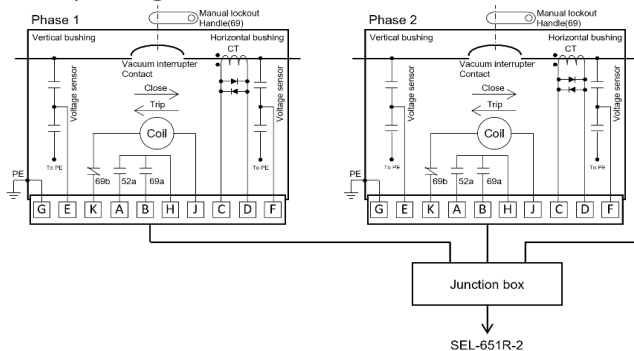
\* Design and specifications are subject to change without notice.

## Options

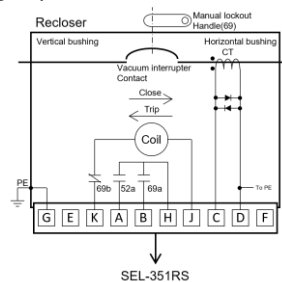
- 2- or 4-hole NEMA pad or clamp type connector
- Animal/bird guard
- Power transformer for controller
- Lightning arrester
- Recloser bracket [Center-pole] [Alley-arm]

# Circuit diagram

## ▼ Triple-single recloser



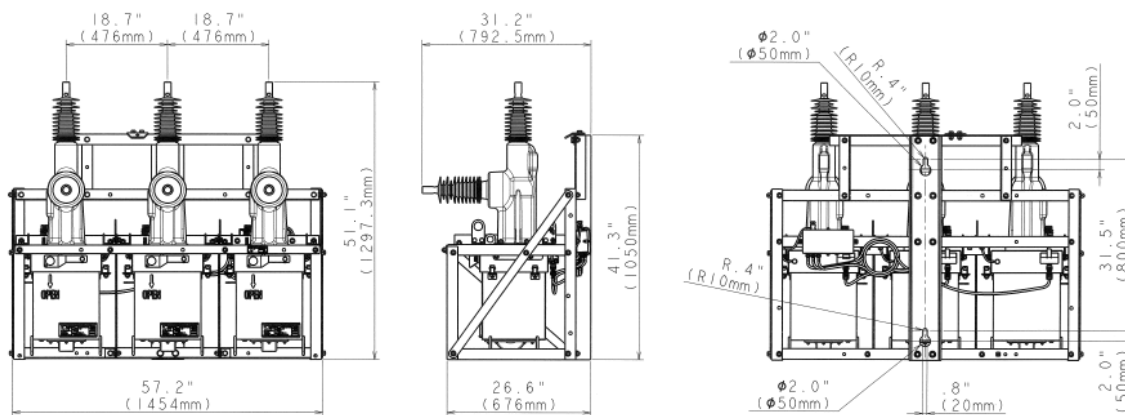
## ▼ Single-phase recloser



# Dimensions

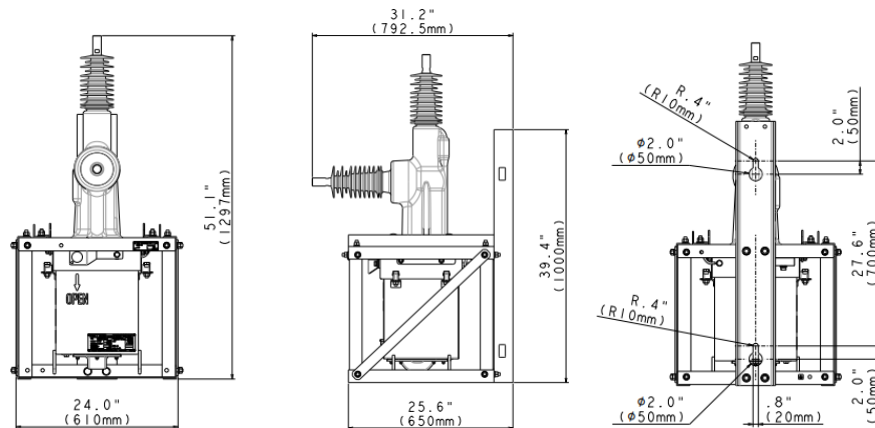
## Triple-single: VBN20-A3-YQ1

Weight: 518 lbs (235 kg)



## Single-phase: VBN20-A1-YF

Weight: 189lbs (86 kg)



# Applicable standard

FAULT CLEAR® is designed and tested in accordance with IEEE C37.60/IEC62271-111:2012. The certified test was carried out at Powertech lab.

Report ID: PL-02215 REP 1, PL-02215 REP 2



# Contact



**Togami Electric Mfg. Co., Ltd.**

1-1 Ohtakara-Kitamachi Saga, 840-0802, Japan  
 TEL: +81-952-25-4131 FAX: +81-952-24-6240  
 E-mail: int.div@togami-elec.co.jp

Scan me!



For More Info.

**FAULT CLEAR®**  
 Triple-Single Auto Recloser

